

Worklist: 6341

REVIEWED
By Britany Wylie at 11:34 am, Apr 19, 2023

<u>LAB_CASE</u>	<u>ITEM</u>	<u>ITEM_TYPE</u>	<u>DESCRIPTION</u>
C2023-0689	1	BCK	AM 27 Blood THC Quant by LC-QQQ
C2023-0759	1	BCK	AM 27 Blood THC Quant by LC-QQQ
C2023-0813	1	BCK	AM 27 Blood THC Quant by LC-QQQ
C2023-0822	1	UCK	AM 27 Urine Cannabinoids Confirmation by LC-QQQ
C2023-0828	1	BCK	AM 27 Blood THC Quant by LC-QQQ



AM# 27: Quantitation of THC and Metabolites in Blood and Urine by LC-MS/MS

Extraction Date 4/18/23
Plate lot#: 230113

Analyst: Anne Nord
Plate re-test: 7/13/23

Mobile phase A: 0.1% Formic Acid in LCMS Water
MTBE LCMS Methanol

Mobile phase B: 0.1% Formic acid in Acetonitrile
Hexane

Blank Blood Lot: 22B52016-1 **Urine Blank:** 12522
LCMS-QQQ ID: 69679

Column: UCT Selectra DA 100 x 2.1mm 3um

Pre-Analytic:

- 1. Check levels of mobile phases and needle wash refill as needed. Ensure waste is not full.
- 2. Ensure correct column is installed and begin mobile phase flow allow to equilibrate ~ 30 minutes.


Analytic:

- 1. Remove standards, plate, controls, and samples from cold storage. Allow to reach room temperature.
- 2. Urine hydrolysis: add 1.5 ml urine to blank plate, add 250 ul 1N KOH mix and incubate at 40 degrees for 15 minutes.
Pipette 1000µL (calibrated pipette) blood or 1000µL hydrolyzed urine Pipette ID: K52558G in wells of analytical (standards) plate.
- 3. Place on shaking incubator at ambient temp., 900rpm for 15 minutes.
- 4. Pipette 500µL 0.1% formic acid in water blood sample, 500 ul saturated phosphate buffer in urine in wells of analytical plate.
- 5. Place on shaking incubator at ambient temp., 900rpm for 15 minutes.
- 6. Transfer 800µL of blood+acid or urine acid mixture to corresponding wells of SLE+ plate.
- 7. Apply positive pressure for approx. 10-15 seconds (or until no liquid remains on top of sorbent).
(Load at 85-100 PSI- Selector to the right) Manifold ID: 66792
- 8. Wait 5 minutes.
- 9. Add 2.25mL MTBE. (Add in 3 increments of 750uL)
- 10. Wait 5 minutes.
- 11. Apply positive pressure for approx. 15 seconds. (10-15 PSI- Selector to the left).
- 12. Add 2.25mL Hexane. (Add in 3 increments of 750uL)
- 13. Wait 5 minutes.
- 14. Apply positive pressure for approx. 15 seconds. (10-15 PSI- Selector to the left).
- 15. Remove plate containing eluate. Place on SPE Dry and evaporate to dryness at approx. 35°C.
SPE Dry ID: 66819
- 16. Reconstitute in 100µL 100% MeOH and heat seal plate with foil. Place in autosampler and run worklist.

Post-Analytic

- 1. Create batch and process data.
- 2. Make any necessary integration changes, Curve weighting of Linear 1/x with r^2 values ≥ 0.98 for each analyte
- 3. RT +/- 3% or 0.100 min, whichever is greater, +/- 20% Accuracy for greater than (+/- 30% for 10ng/ml or less). Ion ratios must be within +/- 20% of the averaged calibrators. SN > 10
- 4. Case sample response for THC 1ng/ml LOD 3ng/ml LOQ, OH-THC 3ng/mL LOD and LOQ, Carboxy-THC: 5 ng/mL (qualitative only). Samples with a THC or OH-THC response over 50 ng/mL will be reported out as greater than 50 ng/mL.
- 5. Did all QCs pass for each analyte? (if not is it describe in comments section)
- 6. Central File Packet to include: LIMS Worklist, Method Checklist, Calibration and Control Reports

COMMENTS: .



	1	2	3	4	5	6
a	cal 1	Internal control urine				
b	cal 2	negative blood				
c	cal 3	689-1				
d	cal 4	759-1				
e	Cal 5	813-1				
f	cal 6	828-1				
g	cal 7	negative urine				
h	Internal control (blood)	822-1				

Plate position 3

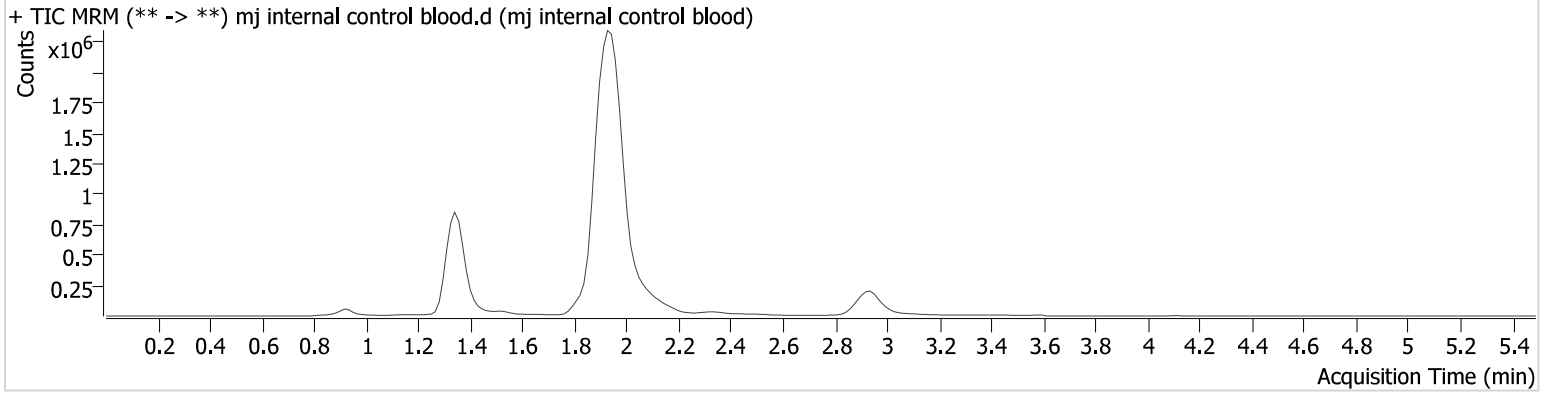
c2023-0 ____ - _

AM #27 Cannabinoids

Batch results D:\MassHunter\Data\2023\am 27-28\041823\QuantResults\cann.batch.bin
Calibration Last Update 4/19/2023 7:46:23 AM

Instrument	69679	Data File	mj internal control blood.d
Type	QC	Sample	mj internal control blood
Acq. Method	AM 27 THC quant.m	Operator	Anne Nord
Sample Position	P3-H1	Comment	
Injection Volume	10		
Acq. Date-Time	4/18/2023 4:50:58 PM		
Sample Info.			

Sample Chromatogram



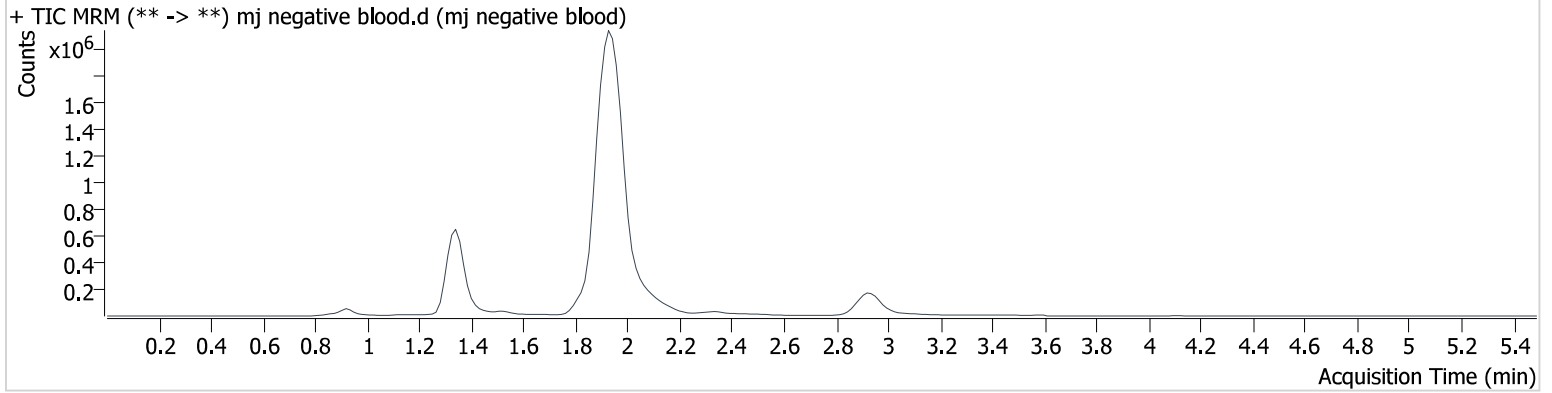
Name	RT	Resp.	S/N	Ratio	S/N	ISTD Resp.	Final Conc.
THC-OH	1.349	48297	∞	910.73	∞	2243223	4.631 ng/ml
THC-COOH	1.373	64266	∞	243.63	∞	817739	14.654 ng/ml
THC	2.941	153018	∞	25.30	∞	1155604	4.807 ng/ml

AM #27 Cannabinoids

Batch results D:\MassHunter\Data\2023\am 27-28\041823\QuantResults\cann.batch.bin
Calibration Last Update 4/19/2023 7:46:23 AM

Instrument	69679	Data File	mj negative blood.d
Type	Sample	Sample	mj negative blood
Acq. Method	AM 27 THC quant.m	Operator	Anne Nord
Sample Position	P3-B2	Comment	
Injection Volume	10		
Acq. Date-Time	4/18/2023 4:57:34 PM		
Sample Info.			

Sample Chromatogram

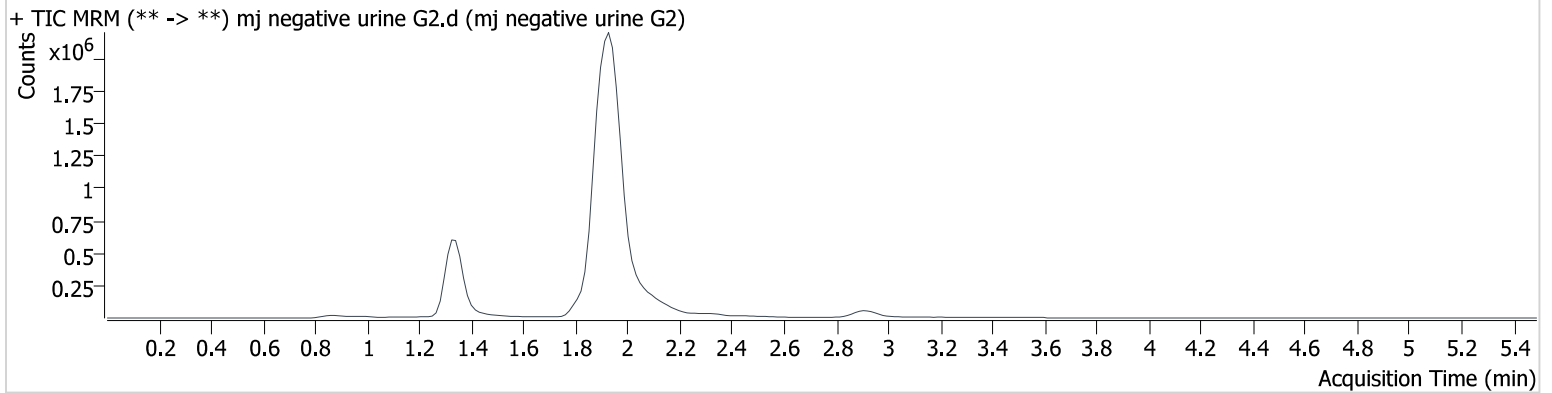


AM #27 Cannabinoids

Batch results D:\MassHunter\Data\2023\am 27-28\041823\QuantResults\cann.batch.bin
Calibration Last Update 4/19/2023 7:46:23 AM

Instrument	69679	Data File	mj negative urine G2.d
Type	Sample	Sample	mj negative urine G2
Acq. Method	AM 27 THC quant.m	Operator	Anne Nord
Sample Position	P3-G2	Comment	
Injection Volume	10		
Acq. Date-Time	4/18/2023 5:56:53 PM		
Sample Info.			

Sample Chromatogram

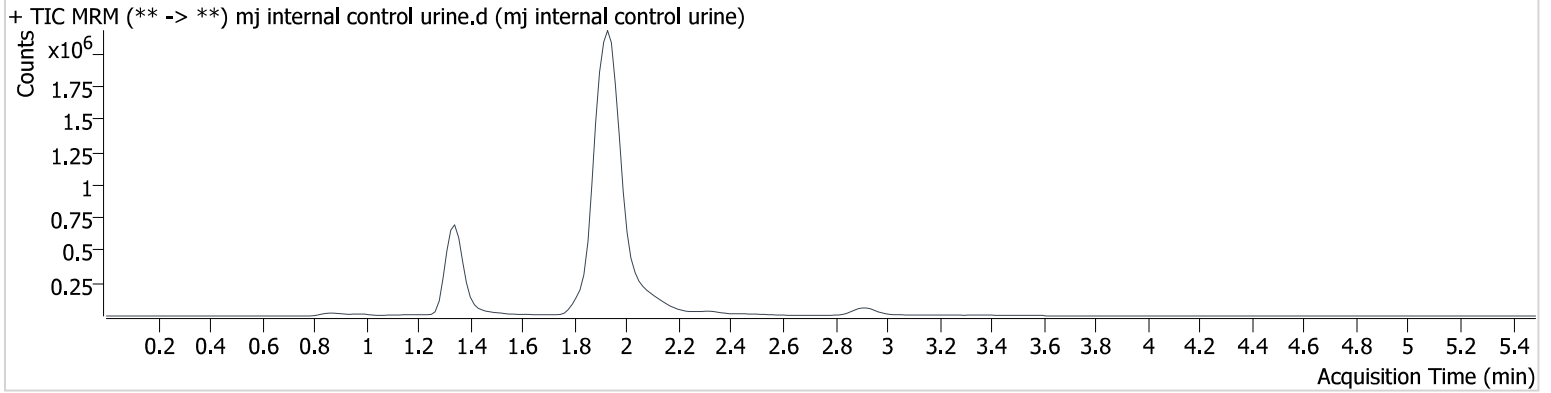


AM #27 Cannabinoids

Batch results D:\MassHunter\Data\2023\am 27-28\041823\QuantResults\cann.batch.bin
Calibration Last Update 4/19/2023 7:46:23 AM

Instrument	69679	Data File	mj internal control urine.d
Type	Sample	Sample	mj internal control urine
Acq. Method	AM 27 THC quant.m	Operator	Anne Nord
Sample Position	P3-A2	Comment	
Injection Volume	10		
Acq. Date-Time	4/18/2023 6:16:39 PM		
Sample Info.			

Sample Chromatogram



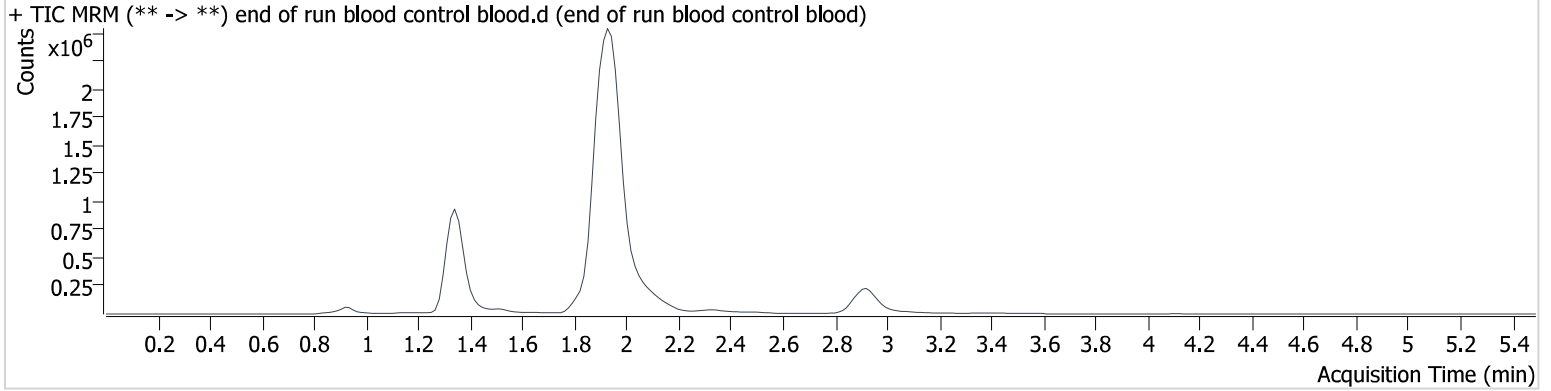
Name	RT	Resp.	S/N	Ratio	S/N	ISTD Resp.	Final Conc.
THC-OH	1.334	37645	∞	848.07	∞	1977824	4.139 ng/ml
THC-COOH	1.358	48057	∞	270.27	∞	609538	14.696 ng/ml
THC	2.926	44128	∞	28.15	∞	341643	4.697 ng/ml

AM #27 Cannabinoids

Batch results D:\MassHunter\Data\2023\am 27-28\041823\QuantResults\cann.batch.bin
Calibration Last Update 4/19/2023 7:46:23 AM

Instrument	69679	Data File	end of run blood control blood.d
Type	Sample	Sample	end of run blood control blood
Acq. Method	AM 27 THC quant.m	Operator	Anne Nord
Sample Position	P3-H1	Comment	
Injection Volume	10		
Acq. Date-Time	4/18/2023 6:23:16 PM		
Sample Info.			

Sample Chromatogram

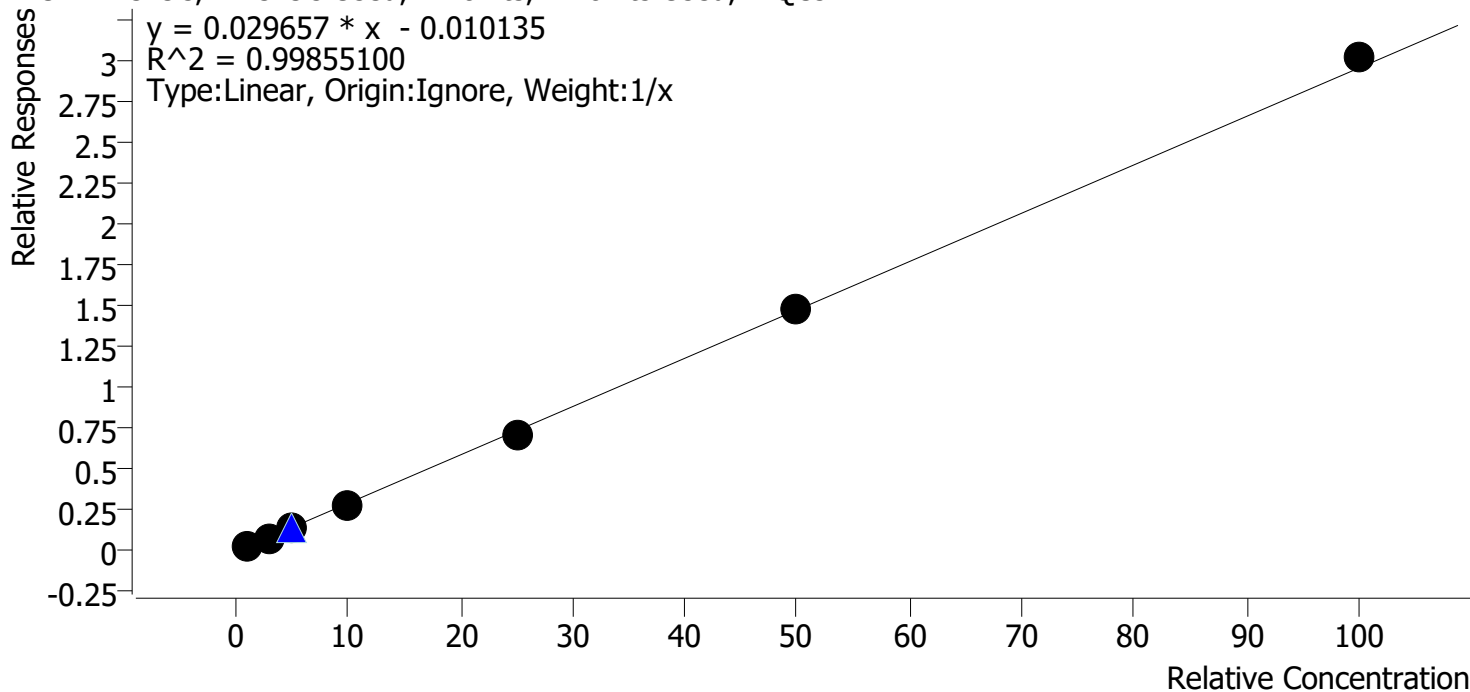


Name	RT	Resp.	S/N	Ratio	S/N	ISTD Resp.	Final Conc.
THC-OH	1.349	47229	13821.3	981.96	∞	2415395	4.242 ng/ml
THC-COOH	1.358	71872	810.8	240.21	∞	892812	14.972 ng/ml
THC	2.926	168000	∞	25.41	∞	1271715	4.796 ng/ml

Compound Calibration Report

Batch results D:\MassHunter\Data\2023\1am 27-28\041823\QuantResults\cann.batch.bin
Last Cal. Update 4/19/2023 7:46 AM
Analyst Name ISP\datastor
Analyte THC **Internal Standard** THC-d3

THC - 7 Levels, 7 Levels Used, 7 Points, 7 Points Used, 1 QCs

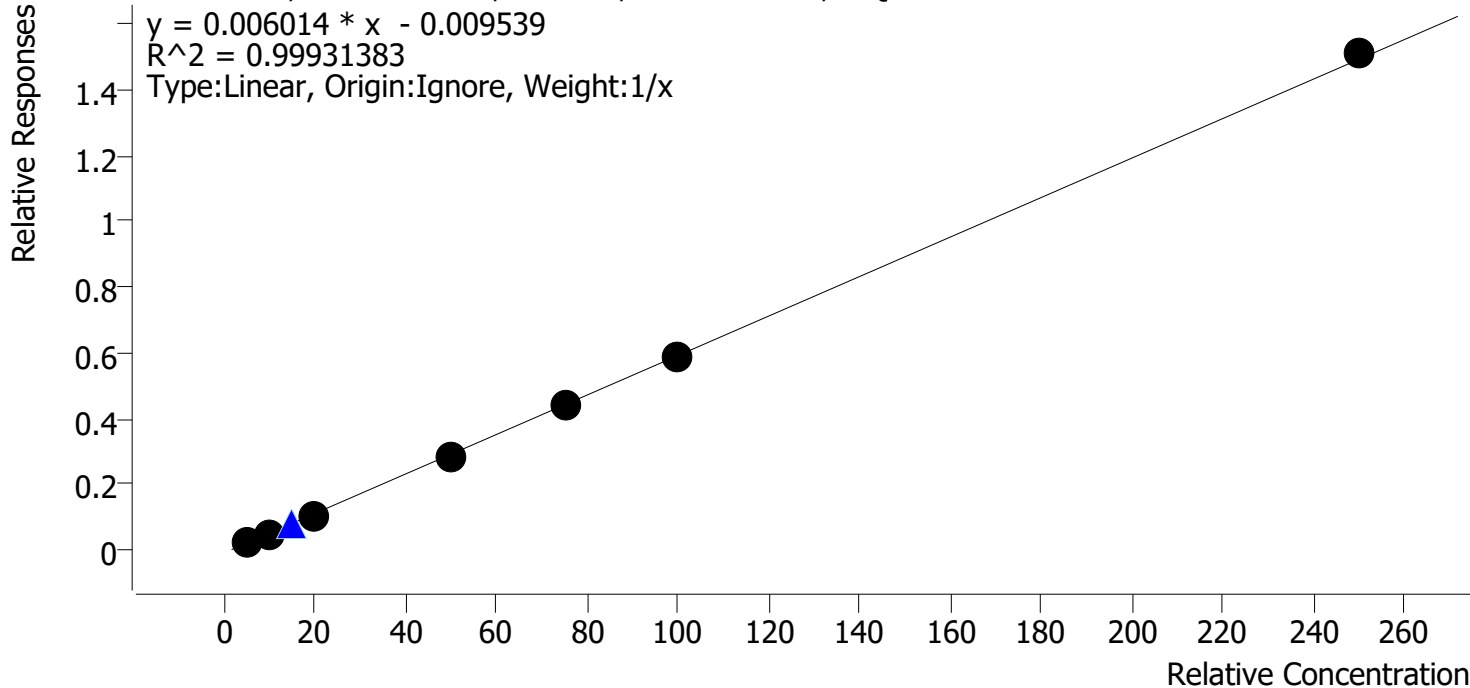


Sample	Level	Enabled	Expected Concentration	Final Concentration	Accuracy
mj cal 1	1	✓	1.0	1.2	122.7
mj cal 2	2	✓	3.0	2.9	96.0
mj cal 3	3	✓	5.0	4.6	91.1
mj cal 4	4	✓	10.0	9.2	91.8
mj cal 5	5	✓	25.0	24.1	96.5
mj cal 6	6	✓	50.0	49.9	99.8
mj cal 7	7	✓	100.0	102.1	102.1

Compound Calibration Report

Batch results	D:\MassHunter\Data\2023\am 27-28\041823\QuantResults\cann.batch.bin		
Last Cal. Update	4/19/2023 7:46 AM		
Analyst Name	ISP\datastor		
Analyte	THC-COOH	Internal Standard	THC-COOH-d9

THC-COOH - 7 Levels, 7 Levels Used, 7 Points, 7 Points Used, 1 QCs

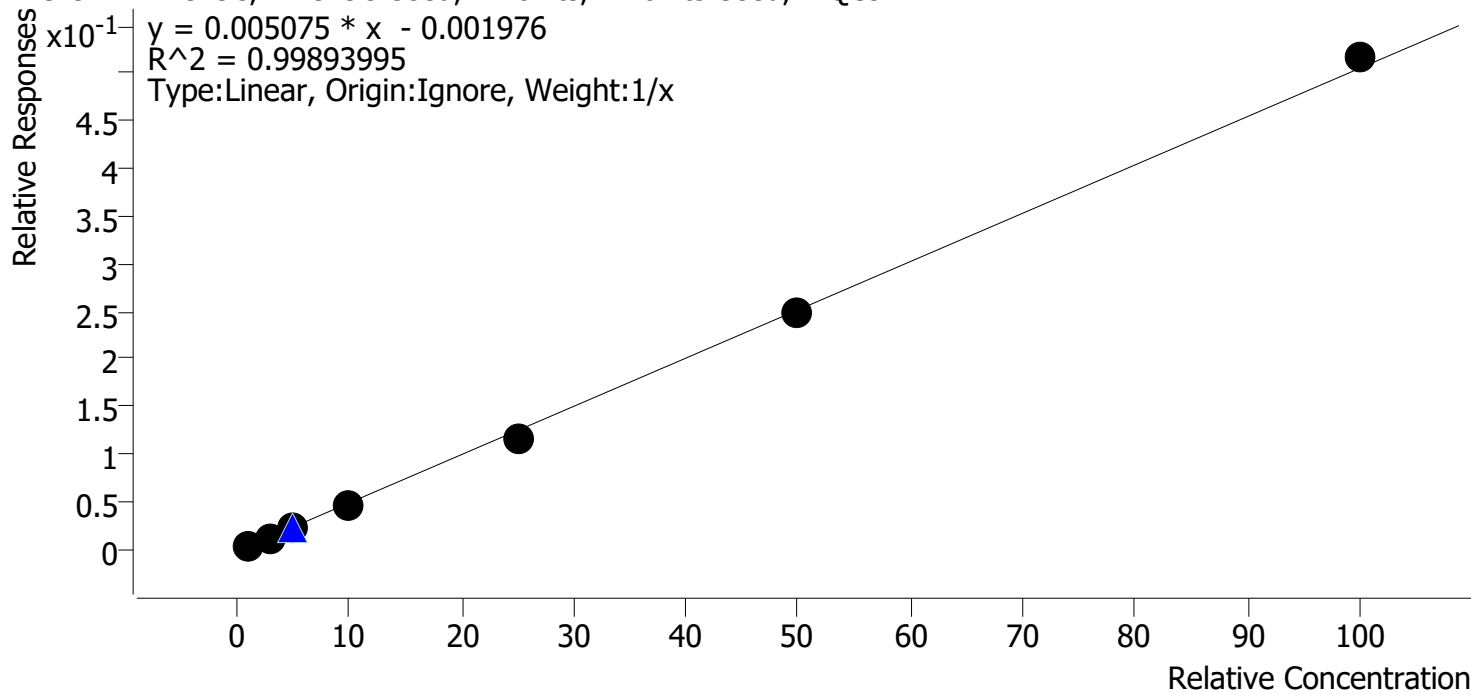


Sample	Level	Enabled	Expected Concentration	Final Concentration	Accuracy
mj cal 1	1	✓	5.0	5.6	112.7
mj cal 2	2	✓	10.0	9.7	96.5
mj cal 3	3	✓	20.0	18.5	92.5
mj cal 4	4	✓	50.0	49.0	98.0
mj cal 5	5	✓	75.0	74.2	99.0
mj cal 6	6	✓	100.0	100.1	100.1
mj cal 7	7	✓	250.0	252.9	101.1

Compound Calibration Report

Batch results D:\MassHunter\Data\2023\am 27-28\041823\QuantResults\cann.batch.bin
Last Cal. Update 4/19/2023 7:46 AM
Analyst Name ISP\datastor
Analyte THC-OH **Internal Standard** THC-OH-d3

THC-OH - 7 Levels, 7 Levels Used, 7 Points, 7 Points Used, 1 QCs



Sample	Level	Enabled	Expected Concentration	Final Concentration	Accuracy
mj cal 1	1	✓	1.0	1.1	114.6
mj cal 2	2	✓	3.0	2.8	94.1
mj cal 3	3	✓	5.0	4.9	98.5
mj cal 4	4	✓	10.0	9.7	97.2
mj cal 5	5	✓	25.0	23.5	94.2
mj cal 6	6	✓	50.0	49.7	99.3
mj cal 7	7	✓	100.0	102.2	102.2

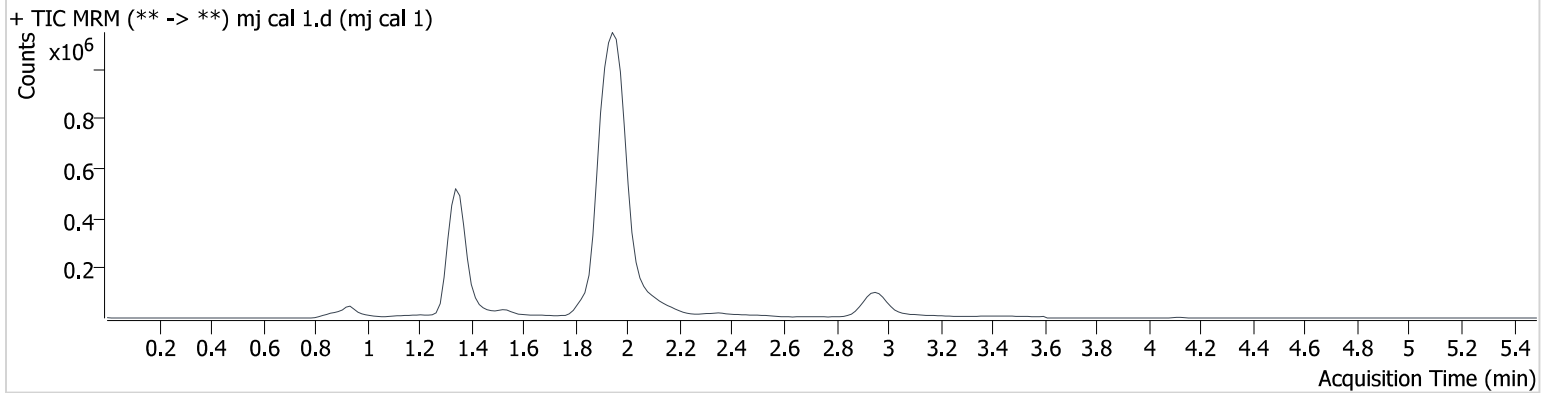
AM #27 Cannabinoids

Batch results D:\MassHunter\Data\2023\am 27-28\041823\QuantResults\cann.batch.bin
Calibration Last Update 4/19/2023 7:46:23 AM

Instrument	69679	Data File	mj cal 1.d
Type	Cal	Sample	mj cal 1
Acq. Method	AM 27 THC quant.m	Operator	Anne Nord
Sample Position	P3-A1	Comment	
Injection Volume	10		
Acq. Date-Time	4/18/2023 4:04:43 PM		

Sample Info.

Sample Chromatogram



Name	RT	Resp.	S/N	Ratio	S/N	ISTD Resp.	Final Conc.
THC-OH	1.349	6863	116.3	945.31	329.2	1788082	1.146 ng/ml Low
THC-COOH	1.373	11091	∞	221.59	∞	455356	5.636 ng/ml
THC	2.971	17001	∞	27.56	56.7	647758	1.227 ng/ml

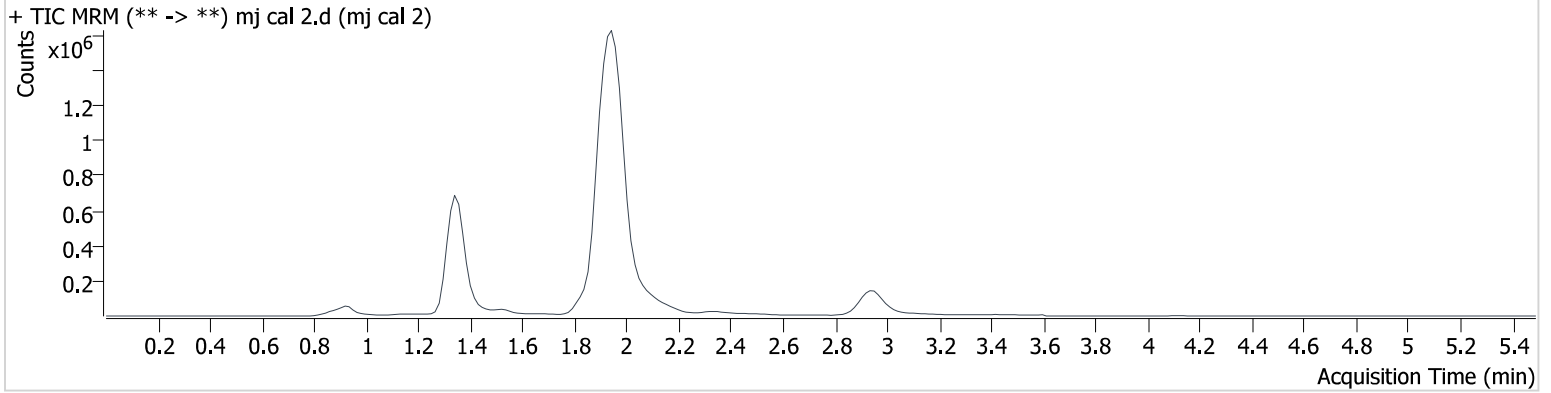
AM #27 Cannabinoids

Batch results D:\MassHunter\Data\2023\am 27-28\041823\QuantResults\cann.batch.bin
Calibration Last Update 4/19/2023 7:46:23 AM

Instrument 69679
Type Cal
Acq. Method AM 27 THC quant.m
Sample Position P3-B1
Injection Volume 10
Acq. Date-Time 4/18/2023 4:11:27 PM
Sample Info.

Data File mj cal 2.d
Sample mj cal 2
Operator Anne Nord
Comment

Sample Chromatogram



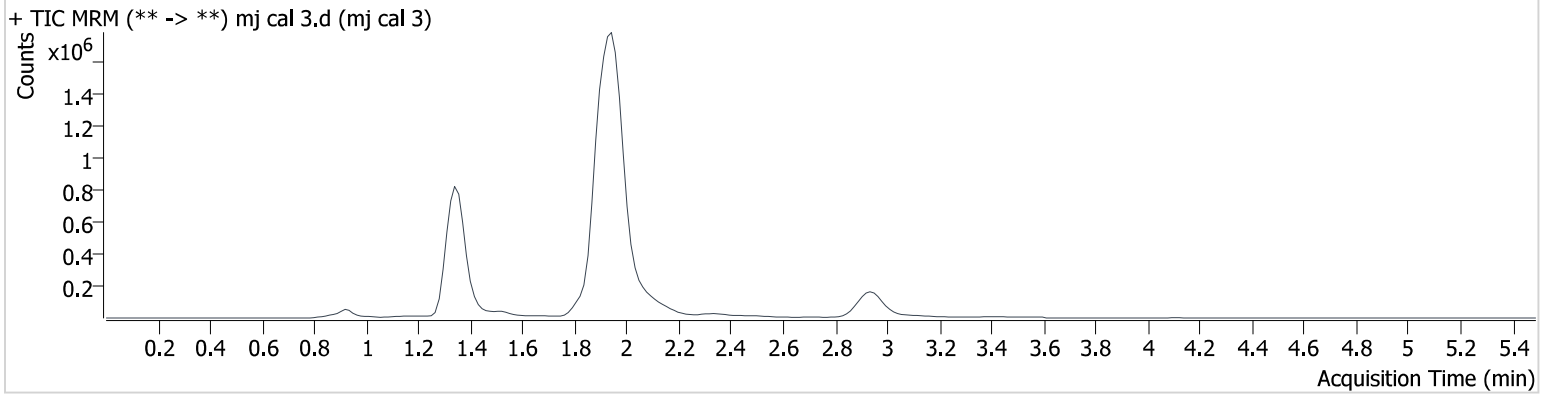
Name	RT	Resp.	S/N	Ratio	S/N	ISTD Resp.	Final Conc.
THC-OH	1.349	25083	∞	894.50	∞	2031654	2.822 ng/ml Low
THC-COOH	1.373	29966	20.7	231.09	∞	617817	9.651 ng/ml
THC	2.956	64881	1248.7	26.96	∞	861945	2.880 ng/ml

AM #27 Cannabinoids

Batch results D:\MassHunter\Data\2023\am 27-28\041823\QuantResults\cann.batch.bin
Calibration Last Update 4/19/2023 7:46:23 AM

Instrument	69679	Data File	mj cal 3.d
Type	Cal	Sample	mj cal 3
Acq. Method	AM 27 THC quant.m	Operator	Anne Nord
Sample Position	P3-C1	Comment	
Injection Volume	10		
Acq. Date-Time	4/18/2023 4:18:03 PM		
Sample Info.			

Sample Chromatogram



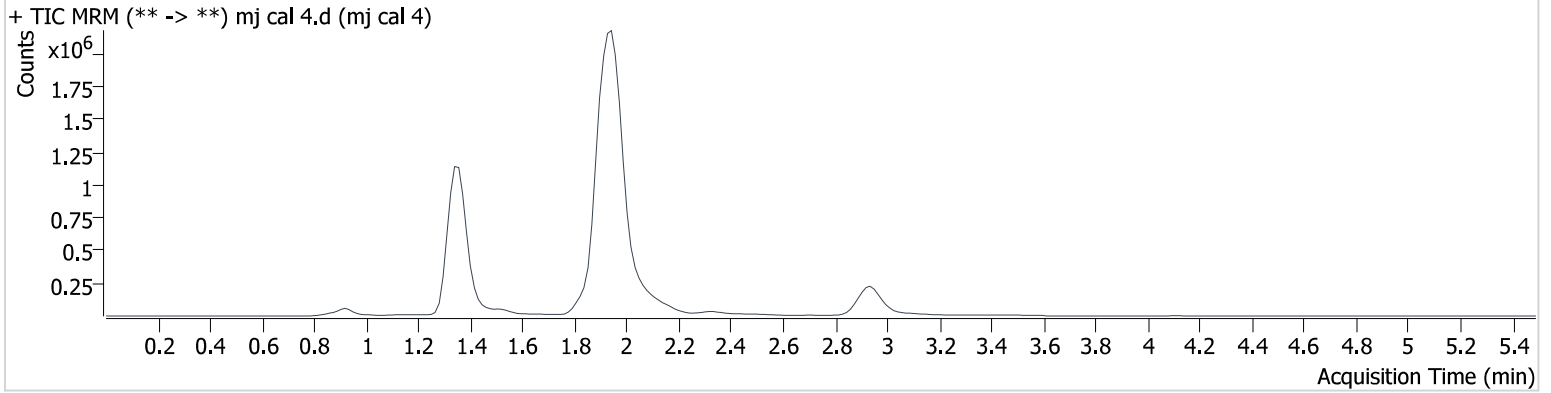
Name	RT	Resp.	S/N	Ratio	S/N	ISTD Resp.	Final Conc.
THC-OH	1.349	51215	∞	909.22	∞	2225465	4.923 ng/ml
THC-COOH	1.373	74819	∞	237.61	825.8	735335	18.505 ng/ml
THC	2.956	121742	∞	24.78	∞	974067	4.556 ng/ml

AM #27 Cannabinoids

Batch results D:\MassHunter\Data\2023\am 27-28\041823\QuantResults\cann.batch.bin
Calibration Last Update 4/19/2023 7:46:23 AM

Instrument	69679	Data File	mj cal 4.d
Type	Cal	Sample	mj cal 4
Acq. Method	AM 27 THC quant.m	Operator	Anne Nord
Sample Position	P3-D1	Comment	
Injection Volume	10		
Acq. Date-Time	4/18/2023 4:24:39 PM		
Sample Info.			

Sample Chromatogram



Name	RT	Resp.	S/N	Ratio	S/N	ISTD Resp.	Final Conc.
THC-OH	1.349	105621	∞	899.00	∞	2229187	9.725 ng/ml
THC-COOH	1.373	216443	1270.0	217.03	∞	758956	49.007 ng/ml
THC	2.941	287973	∞	24.76	∞	1098728	9.179 ng/ml

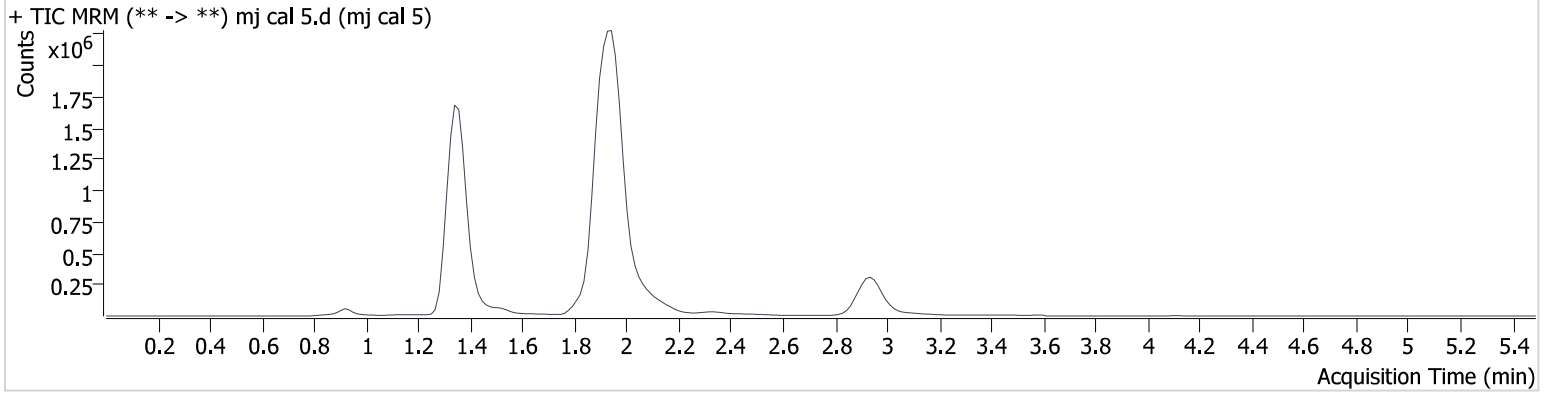
AM #27 Cannabinoids

Batch results D:\MassHunter\Data\2023\am 27-28\041823\QuantResults\cann.batch.bin
Calibration Last Update 4/19/2023 7:46:23 AM

Instrument 69679
Type Cal
Acq. Method AM 27 THC quant.m
Sample Position P3-E1
Injection Volume 10
Acq. Date-Time 4/18/2023 4:31:15 PM
Sample Info.

Data File mj cal 5.d
Sample mj cal 5
Operator Anne Nord
Comment

Sample Chromatogram



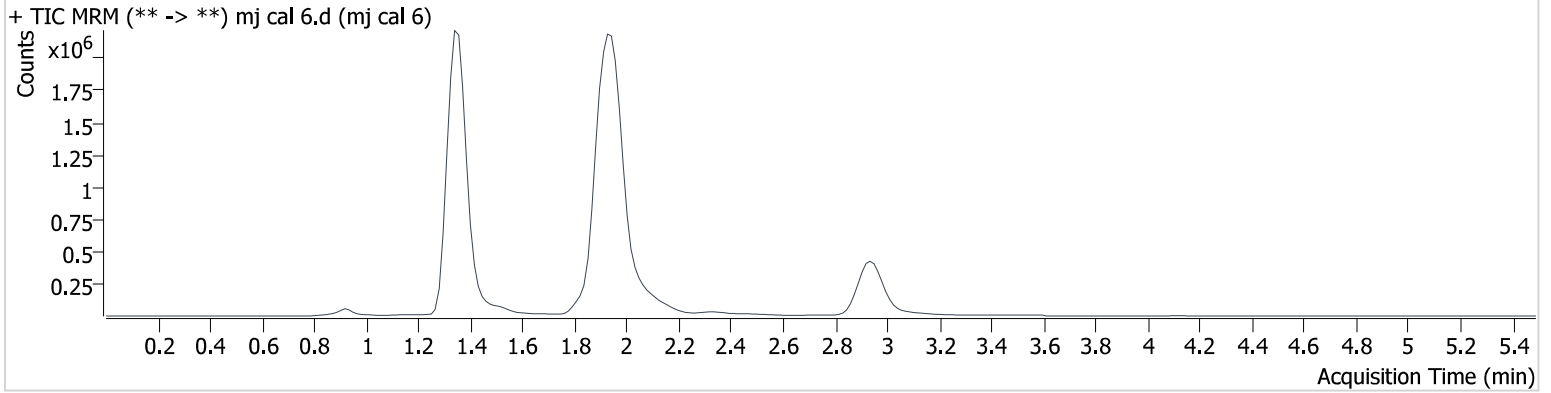
Name	RT	Resp.	S/N	Ratio	S/N	ISTD Resp.	Final Conc.
THC-OH	1.349	277387	∞	923.85	∞	2360925	23.538 ng/ml
THC-COOH	1.373	348004	∞	243.45	∞	796701	74.219 ng/ml
THC	2.956	802728	∞	23.70	∞	1138488	24.116 ng/ml

AM #27 Cannabinoids

Batch results D:\MassHunter\Data\2023\am 27-28\041823\QuantResults\cann.batch.bin
Calibration Last Update 4/19/2023 7:46:23 AM

Instrument	69679	Data File	mj cal 6.d
Type	Cal	Sample	mj cal 6
Acq. Method	AM 27 THC quant.m	Operator	Anne Nord
Sample Position	P3-F1	Comment	
Injection Volume	10		
Acq. Date-Time	4/18/2023 4:37:49 PM		
Sample Info.			

Sample Chromatogram



Name	RT	Resp.	S/N	Ratio	S/N	ISTD Resp.	Final Conc.
THC-OH	1.349	533092	14395.5	877.40	98036 00103 85126. 0	2131230	49.673 ng/ml
THC-COOH	1.373	430440	2699.9	249.98	∞	726333	100.128 ng/ml
THC	2.941	1529752	∞	24.22	∞	1040616	49.910 ng/ml

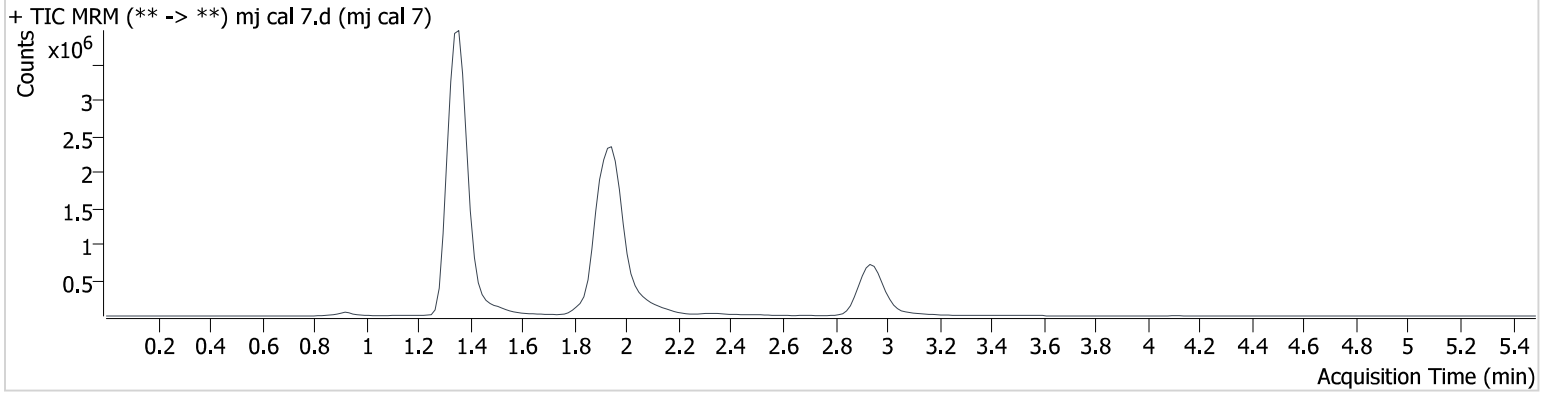
AM #27 Cannabinoids

Batch results D:\MassHunter\Data\2023\am 27-28\041823\QuantResults\cann.batch.bin
Calibration Last Update 4/19/2023 7:46:23 AM

Instrument 69679
Type Cal
Acq. Method AM 27 THC quant.m
Sample Position P3-G1
Injection Volume 10
Acq. Date-Time 4/18/2023 4:44:24 PM
Sample Info.

Data File mj cal 7.d
Sample mj cal 7
Operator Anne Nord
Comment

Sample Chromatogram



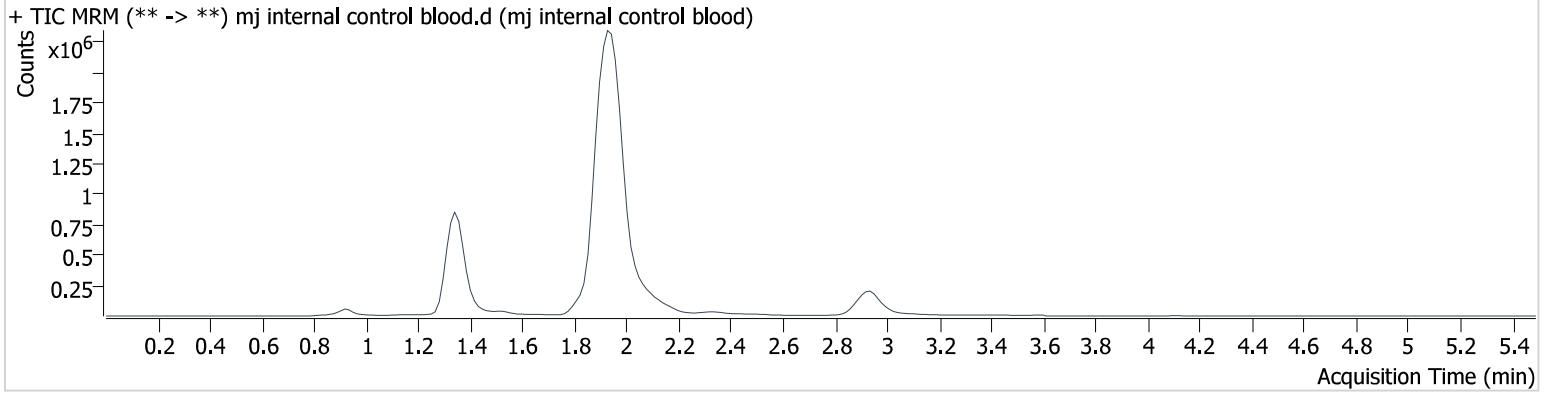
Name	RT	Resp.	S/N	Ratio	S/N	ISTD Resp.	Final Conc.
THC-OH	1.349	1078698	124622.3	865.97	∞	2088094	102.173 ng/ml
THC-COOH	1.373	1060436	∞	241.25	12057.2	701760	252.855 ng/ml
THC	2.941	3187200	∞	24.34	∞	1055801	102.131 ng/ml

AM #27 Cannabinoids

Batch results D:\MassHunter\Data\2023\am 27-28\041823\QuantResults\cann.batch.bin
Calibration Last Update 4/19/2023 7:46:23 AM

Instrument	69679	Data File	mj internal control blood.d
Type	QC	Sample	mj internal control blood
Acq. Method	AM 27 THC quant.m	Operator	Anne Nord
Sample Position	P3-H1	Comment	
Injection Volume	10		
Acq. Date-Time	4/18/2023 4:50:58 PM		
Sample Info.			

Sample Chromatogram



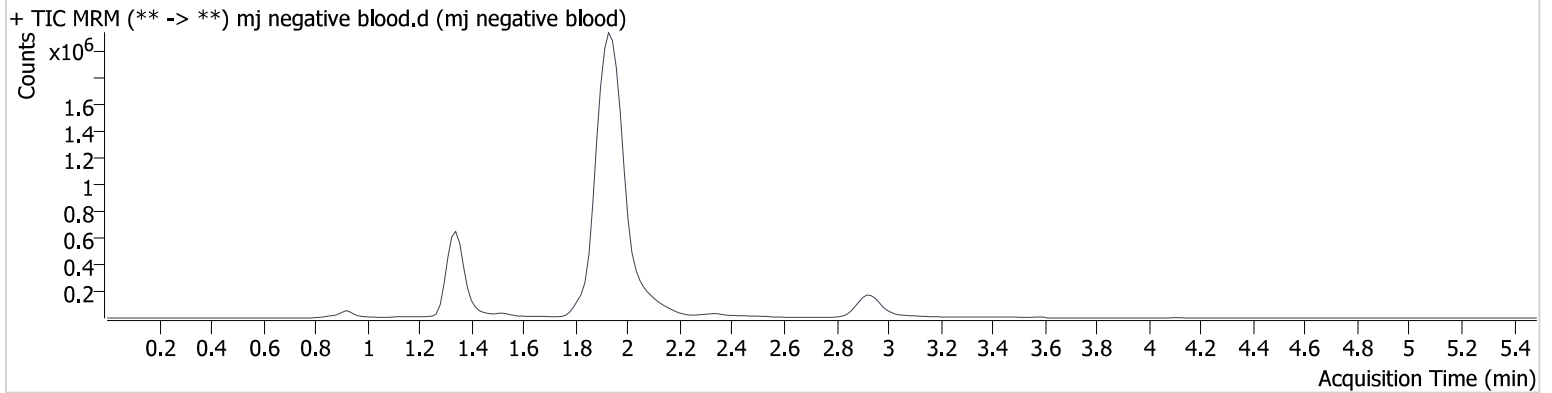
Name	RT	Resp.	S/N	Ratio	S/N	ISTD Resp.	Final Conc.
THC-OH	1.349	48297	∞	910.73	∞	2243223	4.631 ng/ml
THC-COOH	1.373	64266	∞	243.63	∞	817739	14.654 ng/ml
THC	2.941	153018	∞	25.30	∞	1155604	4.807 ng/ml

AM #27 Cannabinoids

Batch results D:\MassHunter\Data\2023\am 27-28\041823\QuantResults\cann.batch.bin
Calibration Last Update 4/19/2023 7:46:23 AM

Instrument	69679	Data File	mj negative blood.d
Type	Sample	Sample	mj negative blood
Acq. Method	AM 27 THC quant.m	Operator	Anne Nord
Sample Position	P3-B2	Comment	
Injection Volume	10		
Acq. Date-Time	4/18/2023 4:57:34 PM		
Sample Info.			

Sample Chromatogram

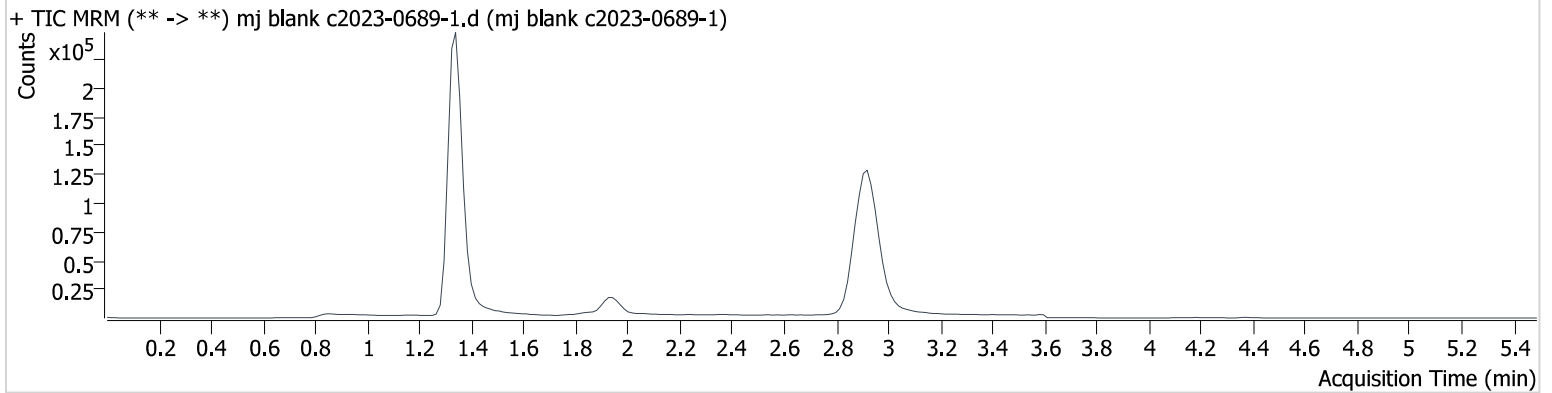


AM #27 Cannabinoids

Batch results D:\MassHunter\Data\2023\am 27-28\041823\QuantResults\cann.batch.bin
Calibration Last Update 4/19/2023 7:46:23 AM

Instrument	69679	Data File	mj blank c2023-0689-1.d
Type	Sample	Sample	mj blank c2023-0689-1
Acq. Method	AM 27 THC quant.m	Operator	Anne Nord
Sample Position	Vial 4	Comment	
Injection Volume	10		
Acq. Date-Time	4/18/2023 5:04:10 PM		
Sample Info.			

Sample Chromatogram

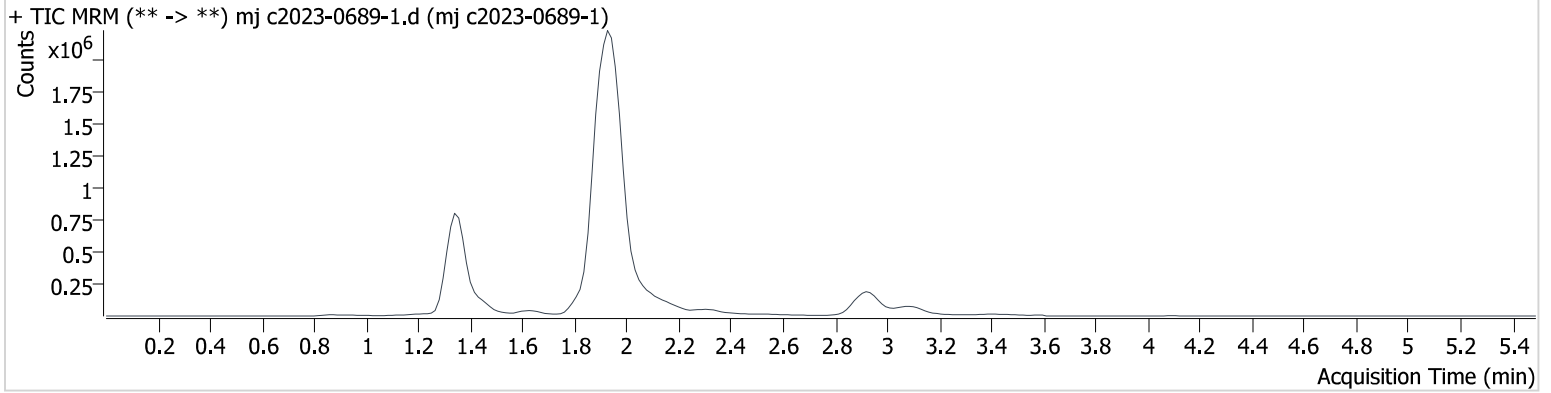


AM #27 Cannabinoids

Batch results D:\MassHunter\Data\2023\am 27-28\041823\QuantResults\cann.batch.bin
Calibration Last Update 4/19/2023 7:46:23 AM

Instrument 69679 **Data File** mj c2023-0689-1.d
Type Sample **Sample** mj c2023-0689-1
Acq. Method AM 27 THC quant.m **Operator** Anne Nord
Sample Position P3-C2 **Comment**
Injection Volume 10
Acq. Date-Time 4/18/2023 5:10:46 PM
Sample Info.

Sample Chromatogram



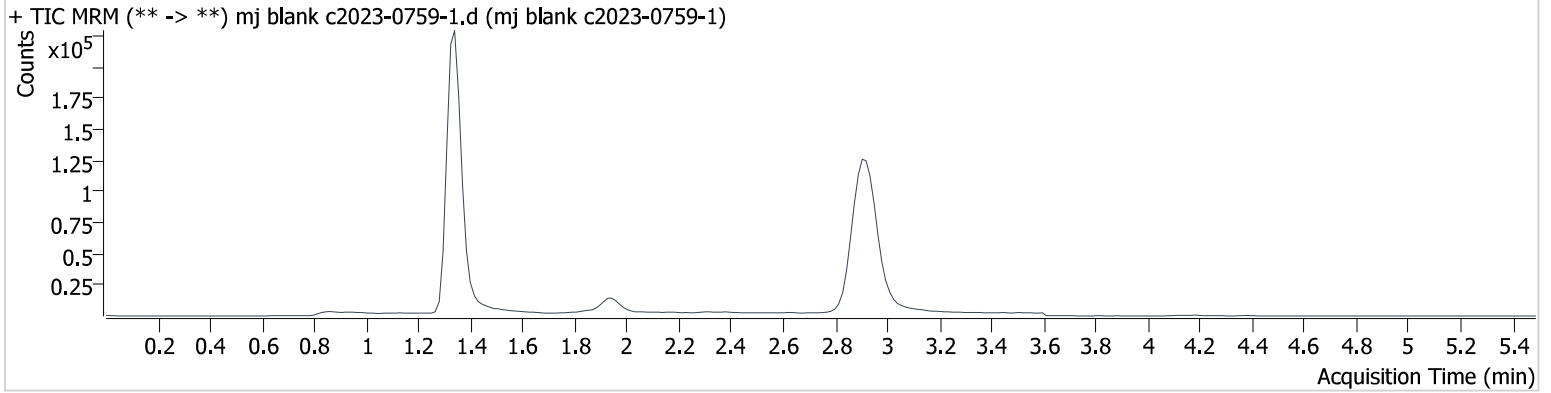
Name	RT	Resp.	S/N	Ratio	S/N	ISTD Resp.	Final Conc.
THC-OH	1.334	7618	207.0	971.64	∞	2009018	1.136 ng/ml Low
THC-COOH	1.358	141853	1855.8	251.32	∞	824755	30.185 ng/ml
THC	2.941	84627	∞	25.49	∞	1153179	2.816 ng/ml

AM #27 Cannabinoids

Batch results D:\MassHunter\Data\2023\am 27-28\041823\QuantResults\cann.batch.bin
Calibration Last Update 4/19/2023 7:46:23 AM

Instrument	69679	Data File	mj blank c2023-0759-1.d
Type	Sample	Sample	mj blank c2023-0759-1
Acq. Method	AM 27 THC quant.m	Operator	Anne Nord
Sample Position	Vial 4	Comment	
Injection Volume	10		
Acq. Date-Time	4/18/2023 5:17:22 PM		
Sample Info.			

Sample Chromatogram

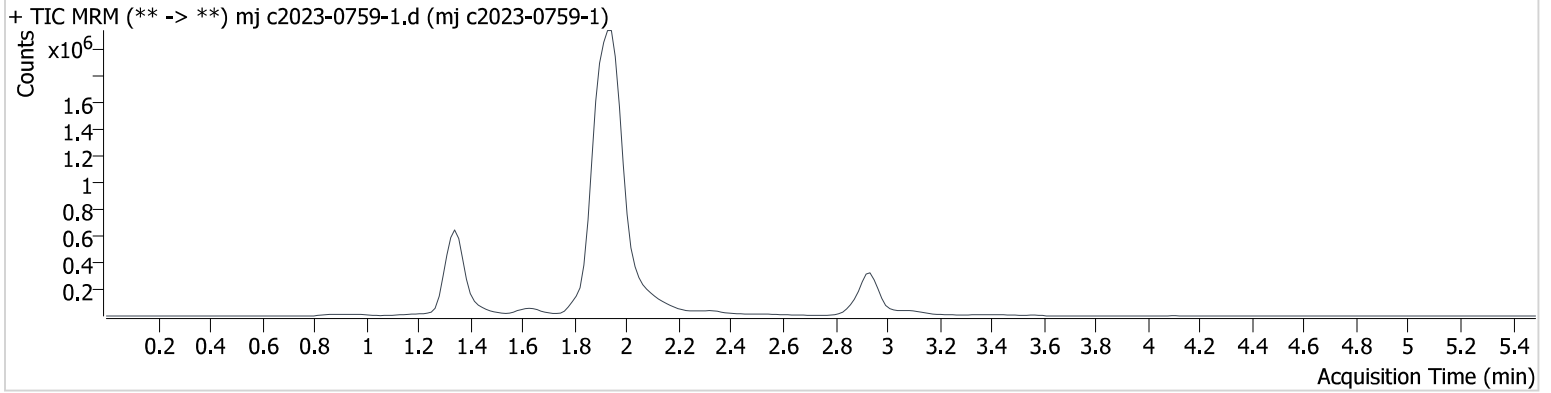


AM #27 Cannabinoids

Batch results D:\MassHunter\Data\2023\am 27-28\041823\QuantResults\cann.batch.bin
Calibration Last Update 4/19/2023 7:46:23 AM

Instrument	69679	Data File	mj c2023-0759-1.d
Type	Sample	Sample	mj c2023-0759-1
Acq. Method	AM 27 THC quant.m	Operator	Anne Nord
Sample Position	P3-D2	Comment	
Injection Volume	10		
Acq. Date-Time	4/18/2023 5:23:58 PM		
Sample Info.			

Sample Chromatogram



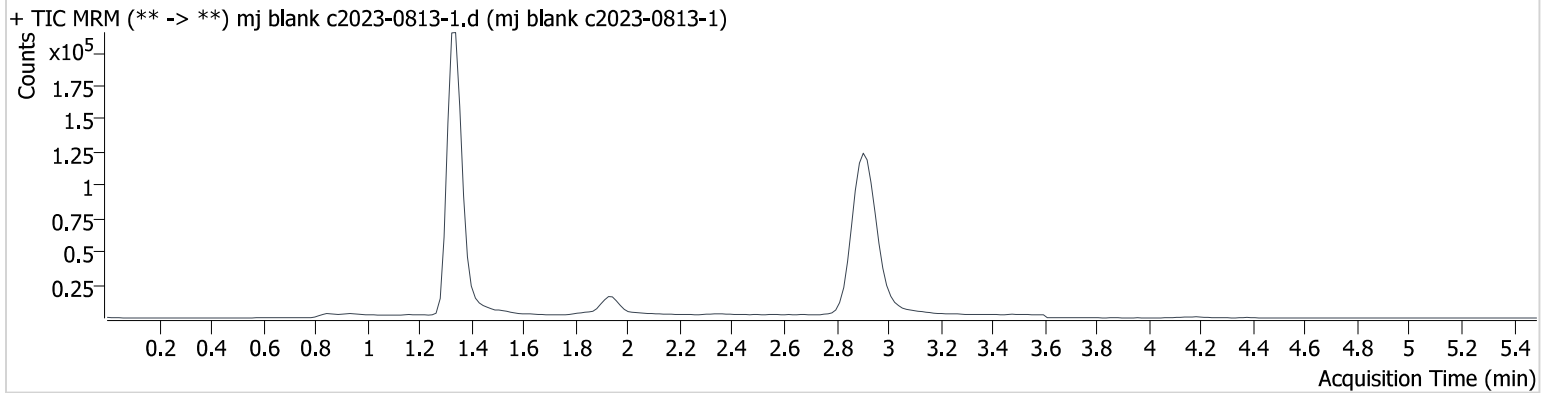
Name	RT	Resp.	S/N	Ratio	S/N	ISTD Resp.	Final Conc.
THC-OH	1.349	7289	∞	617.24 Low	∞	1967512	1.119 ng/ml Low
THC-COOH	1.358	44106	∞	287.65	∞	727635	11.665 ng/ml
THC	2.941	125092	∞	24.61	101.5	1724708	2.787 ng/ml

AM #27 Cannabinoids

Batch results D:\MassHunter\Data\2023\am 27-28\041823\QuantResults\cann.batch.bin
Calibration Last Update 4/19/2023 7:46:23 AM

Instrument	69679	Data File	mj blank c2023-0813-1.d
Type	Sample	Sample	mj blank c2023-0813-1
Acq. Method	AM 27 THC quant.m	Operator	Anne Nord
Sample Position	Vial 4	Comment	
Injection Volume	10		
Acq. Date-Time	4/18/2023 5:30:32 PM		
Sample Info.			

Sample Chromatogram

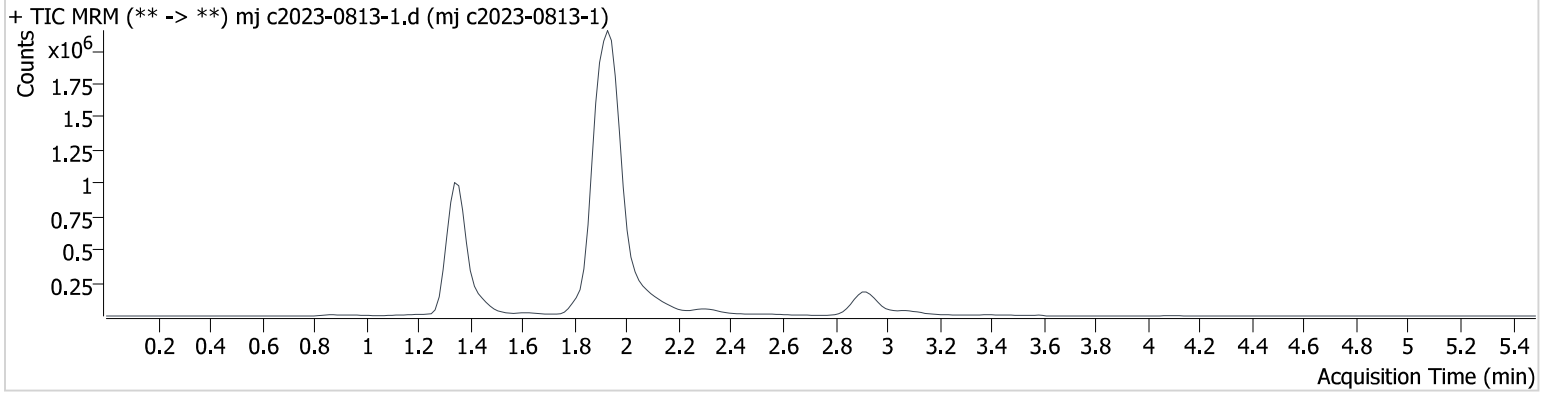


AM #27 Cannabinoids

Batch results D:\MassHunter\Data\2023\am 27-28\041823\QuantResults\cann.batch.bin
Calibration Last Update 4/19/2023 7:46:23 AM

Instrument	69679	Data File	mj c2023-0813-1.d
Type	Sample	Sample	mj c2023-0813-1
Acq. Method	AM 27 THC quant.m	Operator	Anne Nord
Sample Position	P3-E2	Comment	
Injection Volume	10		
Acq. Date-Time	4/18/2023 5:37:08 PM		
Sample Info.			

Sample Chromatogram



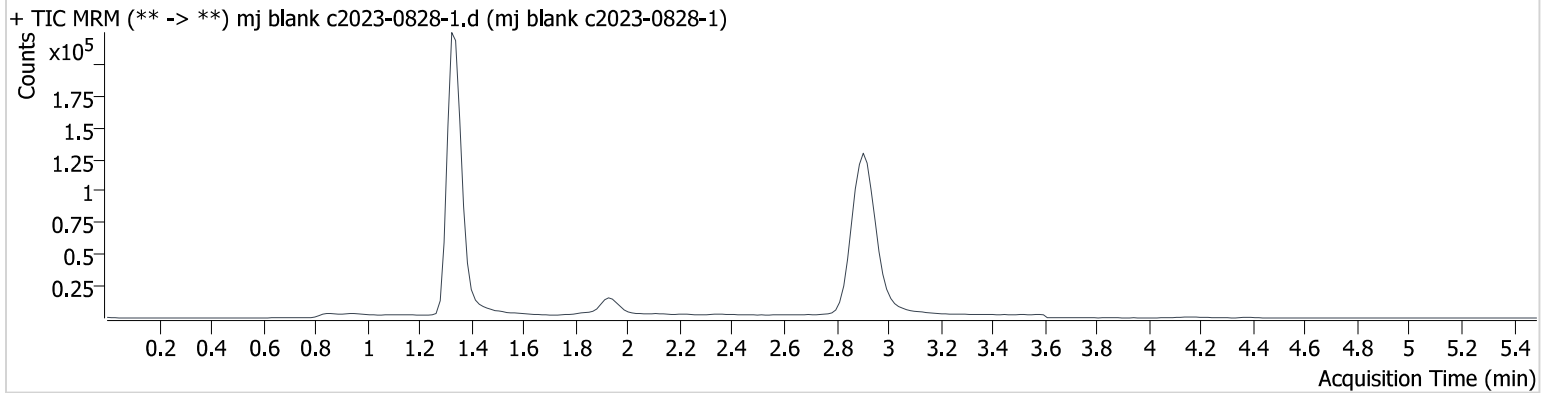
Name	RT	Resp.	S/N	Ratio	S/N	ISTD Resp.	Final Conc.
THC-OH	1.334	32686	2473.2	778.97	∞	1989729	3.626 ng/ml
THC-COOH	1.358	262707	∞	249.20	∞	825222	54.521 ng/ml
THC	2.926	182466	∞	25.00	∞	1021086	6.367 ng/ml

AM #27 Cannabinoids

Batch results D:\MassHunter\Data\2023\am 27-28\041823\QuantResults\cann.batch.bin
Calibration Last Update 4/19/2023 7:46:23 AM

Instrument	69679	Data File	mj blank c2023-0828-1.d
Type	Sample	Sample	mj blank c2023-0828-1
Acq. Method	AM 27 THC quant.m	Operator	Anne Nord
Sample Position	Vial 4	Comment	
Injection Volume	10		
Acq. Date-Time	4/18/2023 5:43:42 PM		
Sample Info.			

Sample Chromatogram



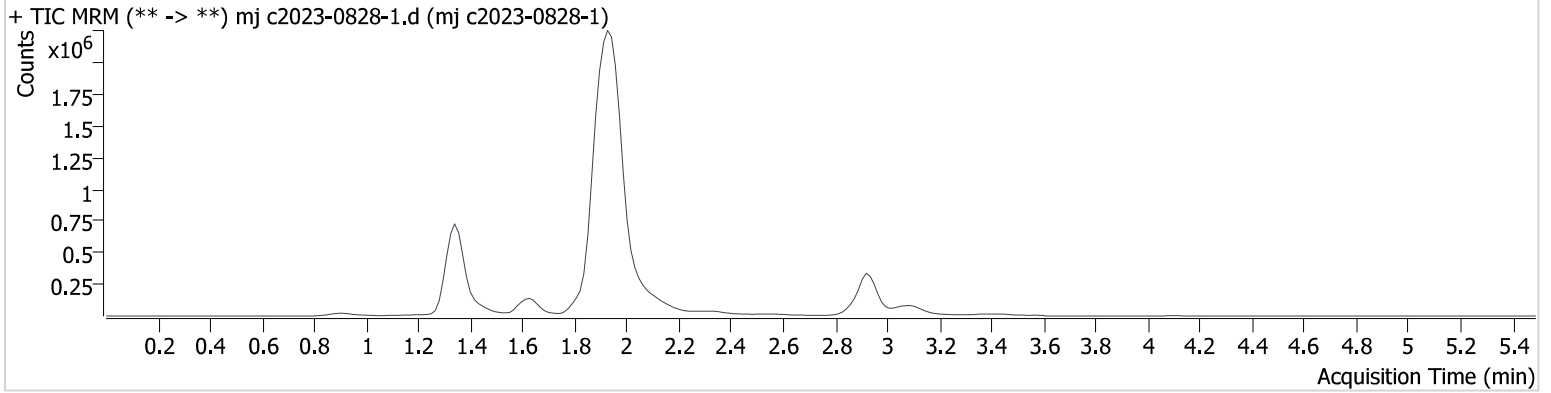
AM #27 Cannabinoids

Batch results D:\MassHunter\Data\2023\am 27-28\041823\QuantResults\cann.batch.bin
Calibration Last Update 4/19/2023 7:46:23 AM

Instrument	69679	Data File	mj c2023-0828-1.d
Type	Sample	Sample	mj c2023-0828-1
Acq. Method	AM 27 THC quant.m	Operator	Anne Nord
Sample Position	P3-F2	Comment	
Injection Volume	10		
Acq. Date-Time	4/18/2023 5:50:18 PM		

Sample Info.

Sample Chromatogram



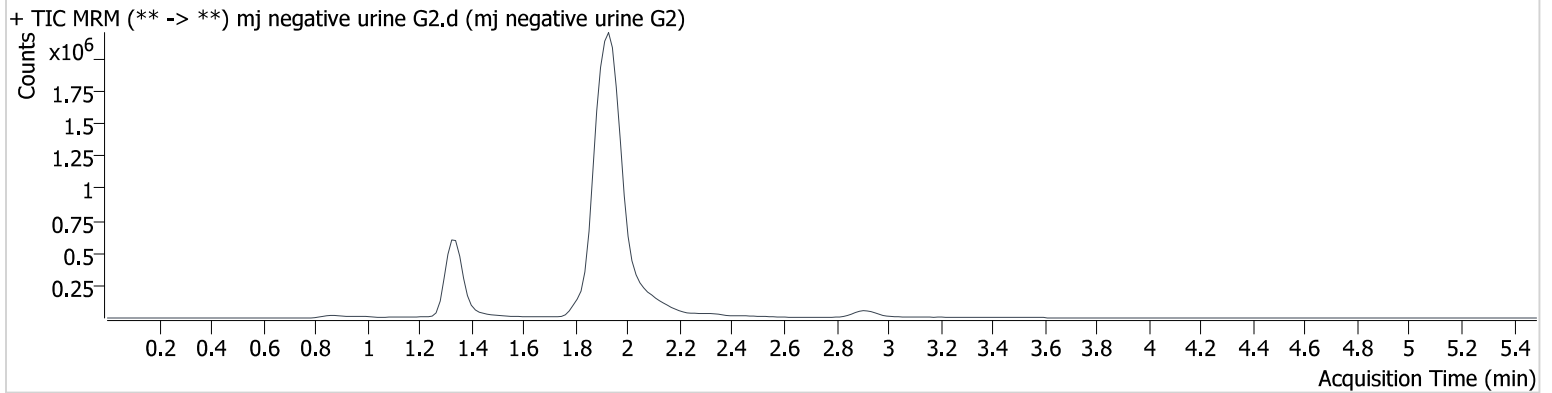
Name	RT	Resp.	S/N	Ratio	S/N	ISTD Resp.	Final Conc.	
THC-OH	1.349	14606	∞	980.49	∞	1905938	1.899 ng/ml	Low
THC-COOH	1.358	74407	∞	240.01	∞	765605	17.746 ng/ml	
THC	2.941	39225	∞	28.48	∞	1773856	1.087 ng/ml	

AM #27 Cannabinoids

Batch results D:\MassHunter\Data\2023\am 27-28\041823\QuantResults\cann.batch.bin
Calibration Last Update 4/19/2023 7:46:23 AM

Instrument	69679	Data File	mj negative urine G2.d
Type	Sample	Sample	mj negative urine G2
Acq. Method	AM 27 THC quant.m	Operator	Anne Nord
Sample Position	P3-G2	Comment	
Injection Volume	10		
Acq. Date-Time	4/18/2023 5:56:53 PM		
Sample Info.			

Sample Chromatogram

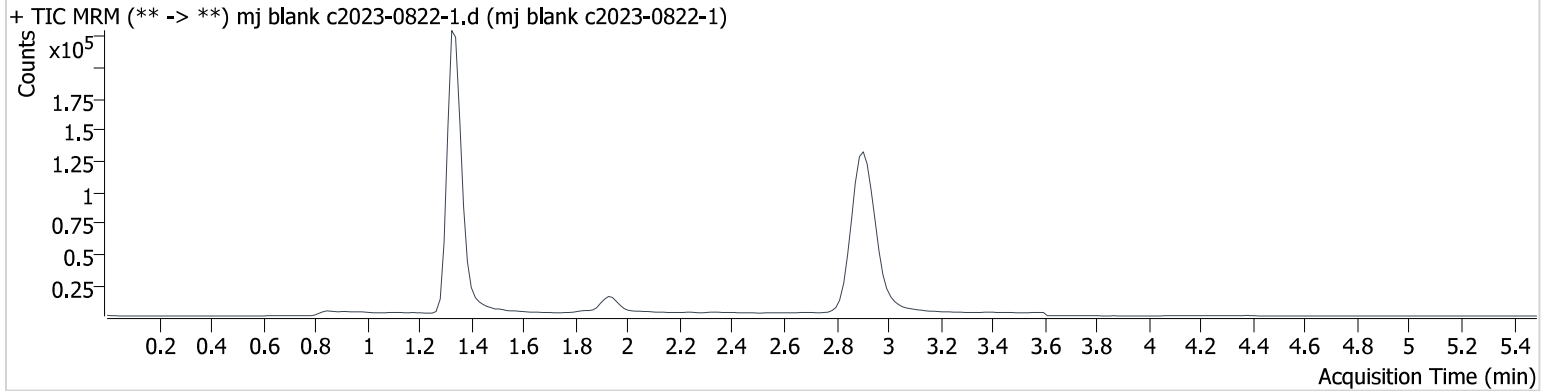


AM #27 Cannabinoids

Batch results D:\MassHunter\Data\2023\am 27-28\041823\QuantResults\cann.batch.bin
Calibration Last Update 4/19/2023 7:46:23 AM

Instrument	69679	Data File	mj blank c2023-0822-1.d
Type	Sample	Sample	mj blank c2023-0822-1
Acq. Method	AM 27 THC quant.m	Operator	Anne Nord
Sample Position	Vial 4	Comment	
Injection Volume	10		
Acq. Date-Time	4/18/2023 6:03:29 PM		
Sample Info.			

Sample Chromatogram

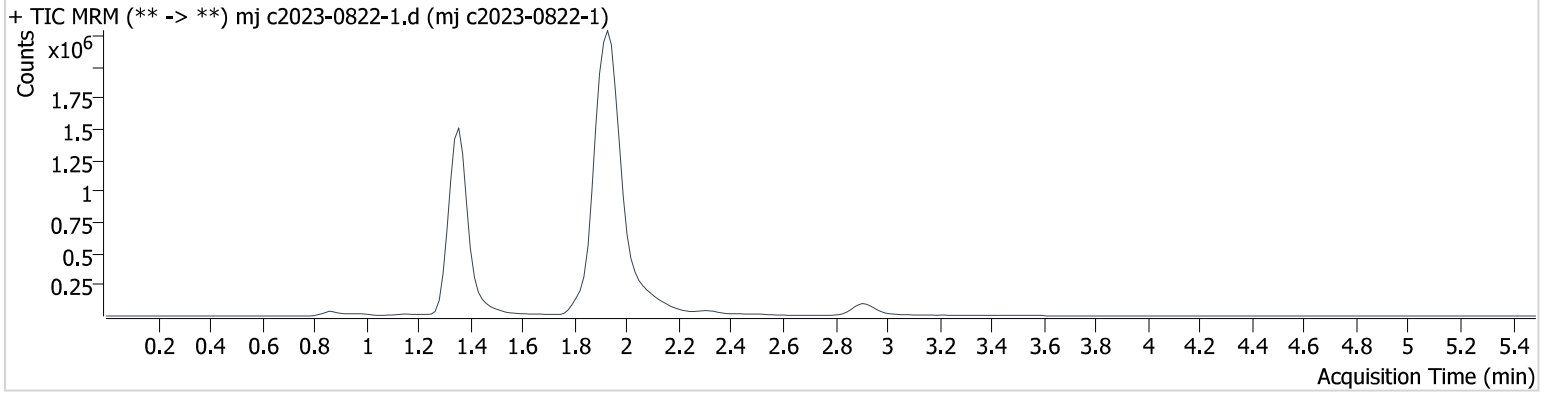


AM #27 Cannabinoids

Batch results D:\MassHunter\Data\2023\am 27-28\041823\QuantResults\cann.batch.bin
Calibration Last Update 4/19/2023 7:46:23 AM

Instrument	69679	Data File	mj c2023-0822-1.d
Type	Sample	Sample	mj c2023-0822-1
Acq. Method	AM 27 THC quant.m	Operator	Anne Nord
Sample Position	P3-H2	Comment	
Injection Volume	10		
Acq. Date-Time	4/18/2023 6:10:05 PM		
Sample Info.			

Sample Chromatogram



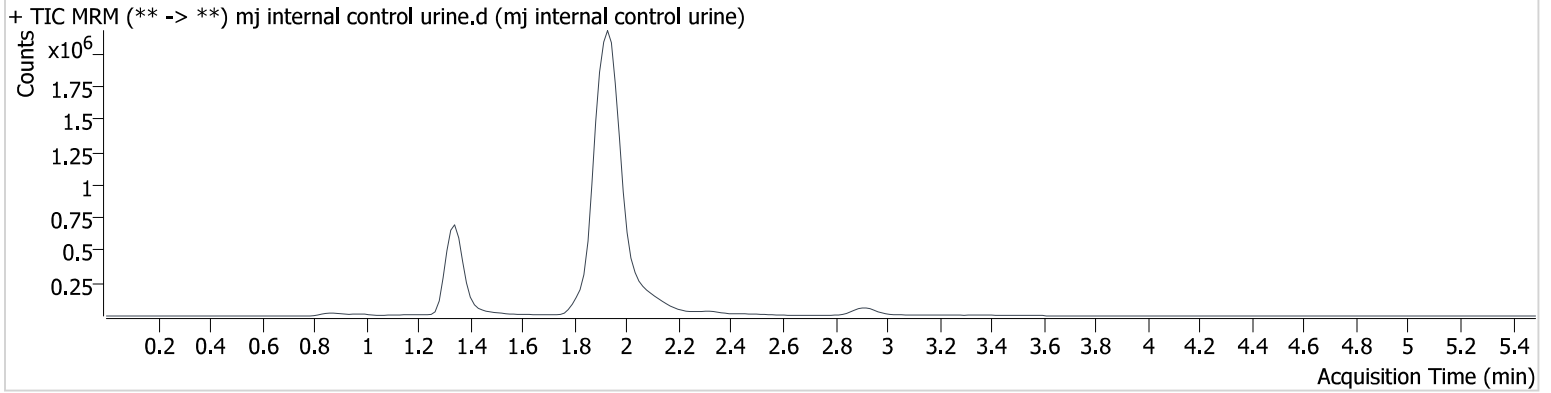
Name	RT	Resp.	S/N	Ratio	S/N	ISTD Resp.	Final Conc.
THC-COOH	1.358	574275	1802.2	248.37	4193.4	688964	140.187 ng/ml

AM #27 Cannabinoids

Batch results D:\MassHunter\Data\2023\am 27-28\041823\QuantResults\cann.batch.bin
Calibration Last Update 4/19/2023 7:46:23 AM

Instrument	69679	Data File	mj internal control urine.d
Type	Sample	Sample	mj internal control urine
Acq. Method	AM 27 THC quant.m	Operator	Anne Nord
Sample Position	P3-A2	Comment	
Injection Volume	10		
Acq. Date-Time	4/18/2023 6:16:39 PM		
Sample Info.			

Sample Chromatogram



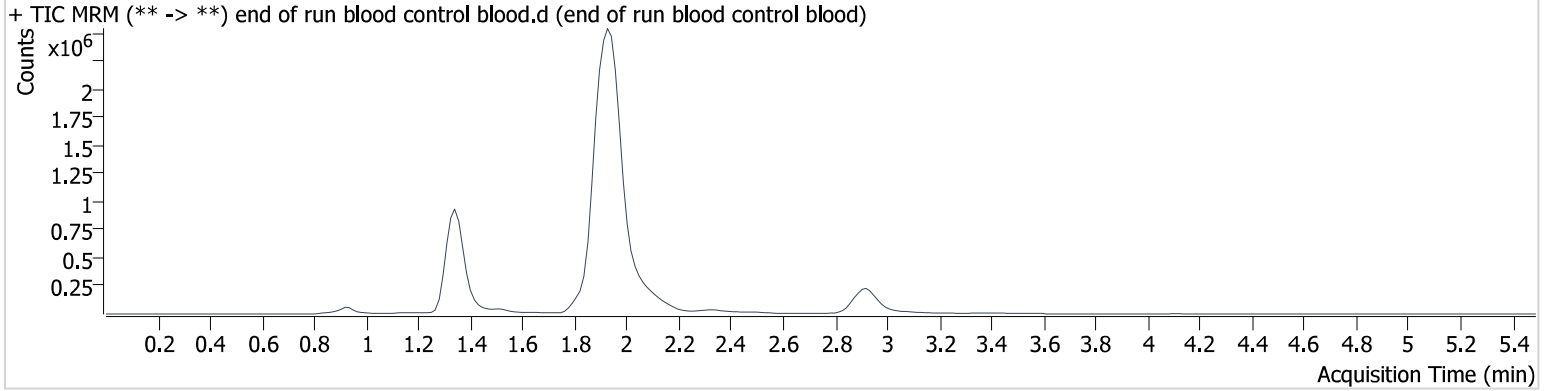
Name	RT	Resp.	S/N	Ratio	S/N	ISTD Resp.	Final Conc.
THC-OH	1.334	37645	∞	848.07	∞	1977824	4.139 ng/ml
THC-COOH	1.358	48057	∞	270.27	∞	609538	14.696 ng/ml
THC	2.926	44128	∞	28.15	∞	341643	4.697 ng/ml

AM #27 Cannabinoids

Batch results D:\MassHunter\Data\2023\am 27-28\041823\QuantResults\cann.batch.bin
Calibration Last Update 4/19/2023 7:46:23 AM

Instrument	69679	Data File	end of run blood control blood.d
Type	Sample	Sample	end of run blood control blood
Acq. Method	AM 27 THC quant.m	Operator	Anne Nord
Sample Position	P3-H1	Comment	
Injection Volume	10		
Acq. Date-Time	4/18/2023 6:23:16 PM		
Sample Info.			

Sample Chromatogram



Name	RT	Resp.	S/N	Ratio	S/N	ISTD Resp.	Final Conc.
THC-OH	1.349	47229	13821.3	981.96	∞	2415395	4.242 ng/ml
THC-COOH	1.358	71872	810.8	240.21	∞	892812	14.972 ng/ml
THC	2.926	168000	∞	25.41	∞	1271715	4.796 ng/ml